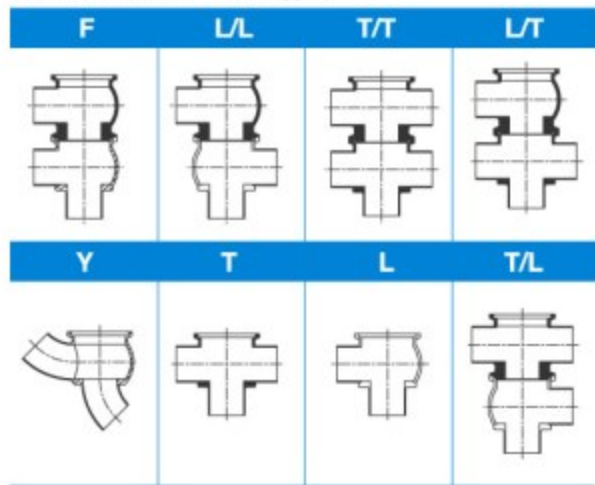
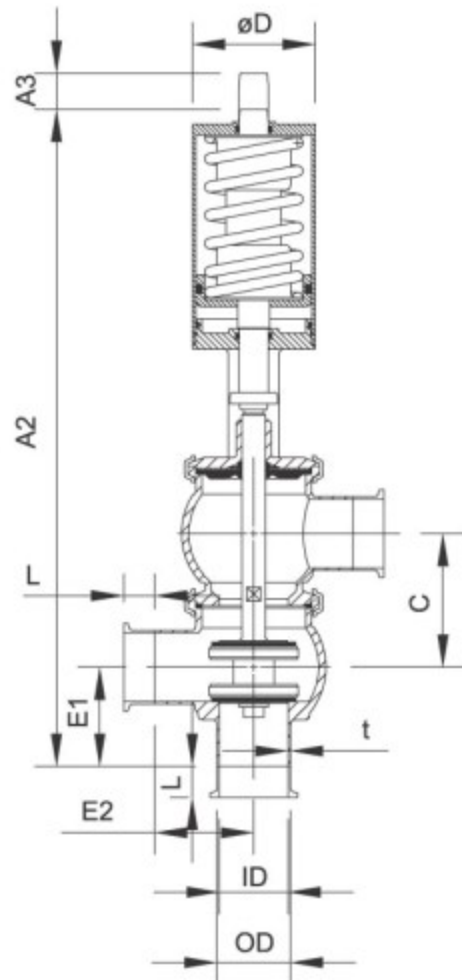




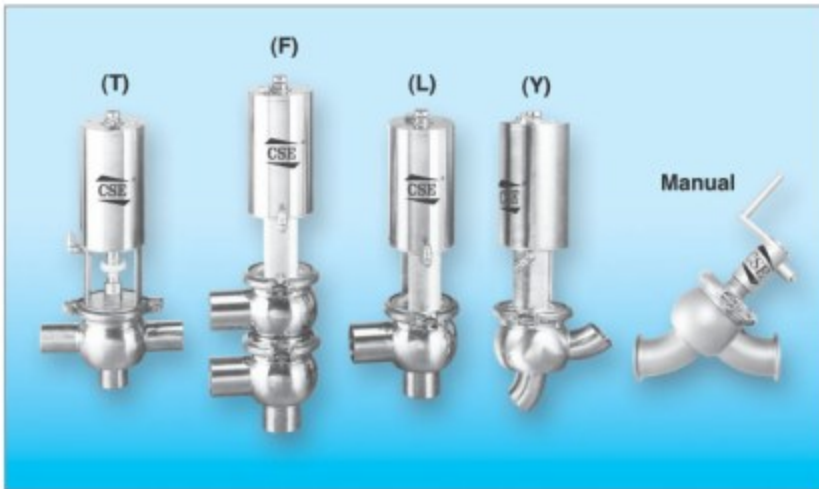
(A) 出口型式圖 Flow Type



Caution, opening / closing time:
 Opening / closing time will be effected by the following
 The air supply (air pressure)
 The length and dimensions of the air hose.
 Number of valves connected to same air hose.
 Use of single solenoid valve for serial connected air
 actuator functions.
 Product pressure.
 Air connections
 Compressed air:
 R1/8"(BSP), internal thread.
 Technical data
 Air pressure: -----5 to 7 bar.



SIZE	25.4	38.1	50.8	63.5	76.1	101.6
ID	22.1	34.7	47.5	60.2	72.9	97.6
OD	25.4	38.1	50.8	63.5	76.1	101.6
AO	202	287	361	444	453	481
A1	14	25	25	32	32	32
A2	258	426	454	563	581	629
A3	14	25	25	32	32	32
ØD	60	85	85	133	133	133
C	55.6	80	92	120	128	148
E1	46	60	68.5	103.5	103.5	103.5
E2	46	68.5	68.5	103.5	103.5	103.5
t	1.65	1.65	1.65	1.65	1.65	2
L/ CLAMP	21.5	21.5	21.5	21.5	21.5	21.5
L/ SMS male	19	23	27	27	27	30
L/ IDF male	21.5	21.5	21.5	21.5	21.5	30
L/ RJT male	21.5	21.5	21.5	21.5	21.5	30

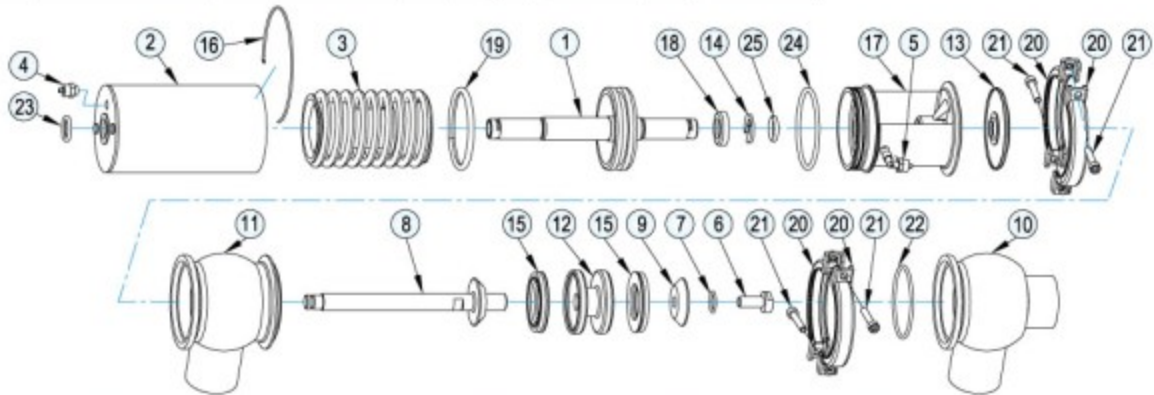


操作使用說明 Operation Instruction

1. CSE pneumatic valve can equipped different type of flow design,(as drawing A) to get various flow control.
2. Can choose SMS, DIN, IDF, RJT, 3A, Ferrule....., Welding; Clamp; Unions.....connect end.
3. Material:
 - 3-1. All products connect with fluid are made of stainless steel AISI 316/316L(1.4401/1.4571).
 - 3-2. The other parts in AISI 304 (1.4301).
 - 3-3. The valve stem is sealed by a special EPDM/Silicone/Viton seat and according international standard for use on food or pharmaceutical.
4. Operating air pressure: 5bar-8bar compressed air.
5. Control ways:
 - a. Designed different type to control various flow, as type L; T; F...etc.
 - b. Choose appropriate dimensions of end, as 2".....clamp or welding.
 - c. Choose appropriate control ways (manual or pneumatic):
 - c-1. Manual control valve are equipped with a rapid pitch screw with protection against unscrewing.
 - c-2. Or choose air/spring(simple effect); or air/air (double effect) for pneumatic control.
 - c-3. Can use CSE automatic control box to get signal transfer and complete individual valve control.
 - c-3-1. Signal transfer:
 - a. with 10-30VDC proximity switch contact:1 or 2pcs (PNP OR NPN)
 - b. Or 3A 125VAC,30VDC micro switch contact: 2pcs
 - c-3-2. Complete individual valve control:
Choose (a) or (b) +DC24 3.0W electric valve:1pc & air manifold (for complete control box).

F型流量閥組合圖與零件表 F type construction assembly drawing & items list

零件表 Parts List											
Item	Part name	Q'TY	Material	Item	Part name	Q'TY	Material	Item	Part name	Q'TY	Material
1	Piston	1	St.St 304	10	Valve body-lower	1	St.St 316	19	X-ring	1	NBR
2	Cylinder	1	St.St 304	11	Valve body-upper	1	St.St 316	20	Clamp	4	St.St 304
3	Spring assembly	1	St.St 304	12	Middle piece	1	St.St 316	21	M6 screws	4	St.St 304
4	Air connect	1	Copper	13	Lip seal-EPDM	1	304/EPDM	22	Valve body -seal ring	1	EPDM
5	Air connect	1	Copper	14	Clip complete	1	St.St 304				
6	Screws	1	St.St. 316	15	Seal ring lower	2	EPDM	23	O-ring	1	NBR
7	O-ring	1	Rubber,NBR	16	Lock wire clip	1	St.St 304	24	O-ring	1	NBR
8	Stem	1	St.St 316	17	Bracket	1	St.St 304	25	O-ring	1	NBR
9	Washer	1	St.St 316	18	Stop ring	1	Tecflo				



管內最大使用安全壓力(注意：超過表上壓力可能會使閥座滲漏，建議加裝防混閥)

Max. flow tube pressure without leakage of valve seat.

If pressure over table Max. suggest to add proof Max. valve

SA. Pneumatic downward movement, spring return (NO-lower seat)

Actuator type / function: AS. Pneumatic upward movement, spring return (NC-lower seat)

AA. Pneumatic upward and downward movement (A/A)

NO : Normal open 常開											
NC : Normal close 常閉											
A/A : Air/Air doubt action											
Table 1: Stop and change-over valves- Max. pressure without leakage at the valve seat											
○ = Max. air input pressure as 8 bar											
➔ = Tube-Line flow pressure											
Actuator/Valve body combination and direction of pressure		Spring closes		Air closes		Air closes		Spring closes		Air closes	
Air pressure (bar)		5 8		5 8		5 8		5 8		5 6	
Actuator Type/Function		SA (NO)		SA (NO)		AS (NC)		AS (NC)		AA (A/A)	
Valve size (Max. Pressure) 管內最大壓力	DN25 (1.0")	9.5	10	10	9.5	10	10	10	10	10	10
	DN38 (1.5")	4.5	7.0	10	4.5	7.0	9.0	10	10	10	10
	DN51 (2.0")	4.5	4.0	5.0	4.5	4.0	9.0	10	9.0	10	10
	DN63.5 (2.5")	3.0	3.0	4.0	3.0	2.5	8.0	9.0	6.0	7.0	10
	DN76 (3.0")	5.0	4.0	6.0	4.5	5.0	10	10	10	10	10